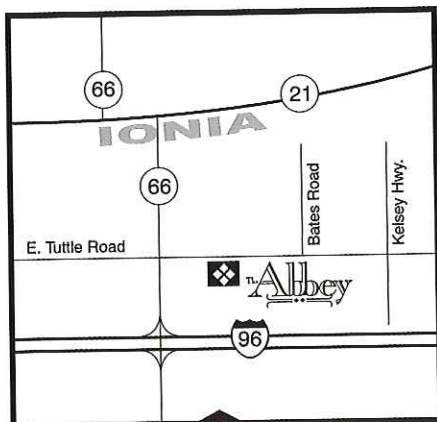




# The Abbey

*This masterfully designed environment blends contemporary living with the serenity of the country. Convenient to shopping and quick access to all major thoroughfares. At The Abbey, we know that few things are as important as the place we call home!*

- 1, 2 and 3 bedroom apartments with spacious floor plans
- Your own full size washer and dryer
- Two full baths in 2 and 3 bedroom apartments
- Each kitchen equipped with:
  - Deluxe space saver microwave
  - Self cleaning oven
  - Deluxe 30 inch electric range
  - Deluxe 16 cubic foot refrigerator/freezer with ice maker
  - Deluxe dishwasher
  - Garbage disposal
- Extra large walk-in closets
- Individually controlled heat/AC
- Ceiling fans
- Vertical and horizontal blinds
- French patio doors and private balcony/patio
- Cable TV outlets in living room and all bedrooms
- Cathedral ceilings in all second floor apartments
- Lighted carports included
- Electronically controlled entrances with intercom
- Professional 24-hour maintenance service



**GILLESPIE**  
group

[www.gillespie-group.com](http://www.gillespie-group.com)

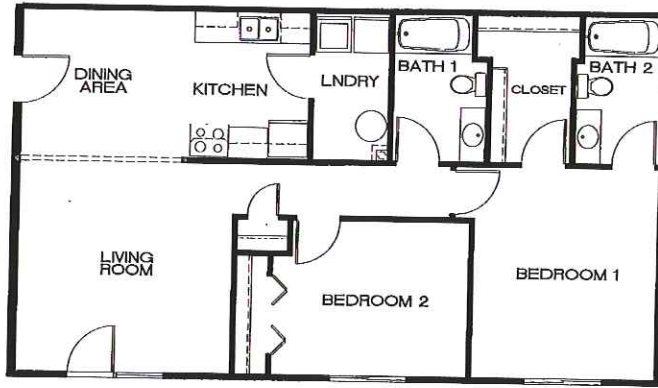
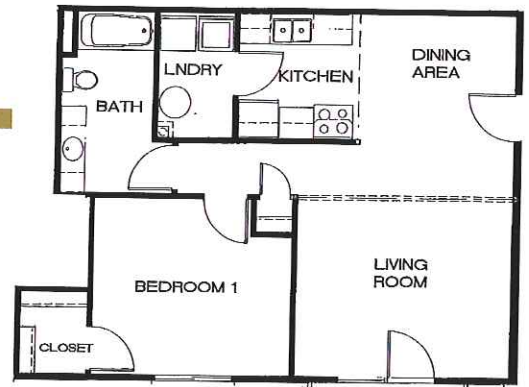
*Furnished Corporate Suites are available upon request.*

*Gillespie creates unique communities by embracing innovation, anticipating people's needs, conducting business with absolute integrity, and passionately pursuing perfection in everything we do.*



## One Bedroom

One Bedroom - One Bath  
 Approx. 720 to 822 sq. ft.  
 1st & 2nd Floor



## Two Bedroom

Two Bedrooms - Two Baths  
 Approx. 1,010 to 1,127 sq. ft.  
 1st & 2nd Floor



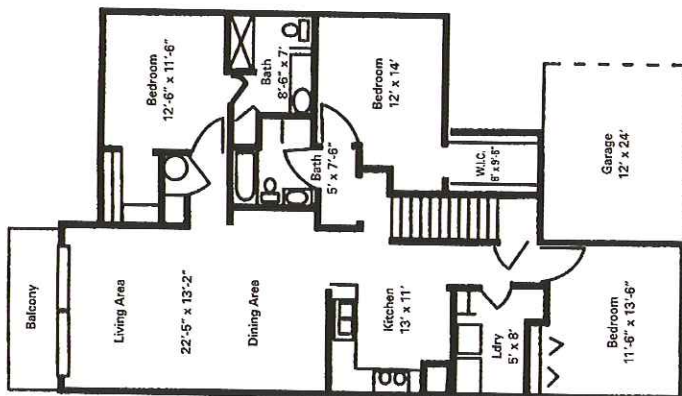
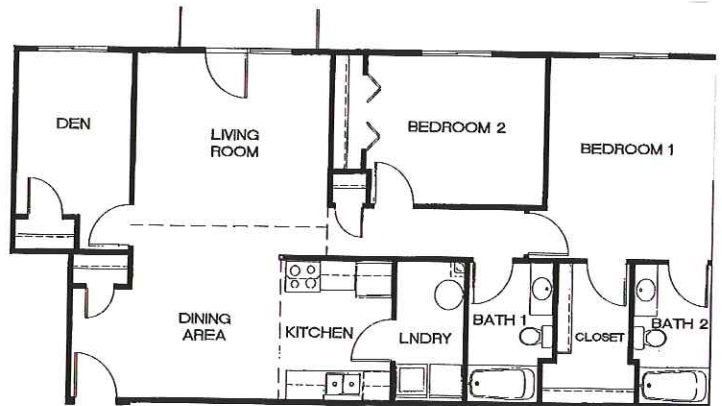
# The Abbey

2575 Heartland Boulevard, #1 \* Ionia, Michigan 48846 \* (616) 522-2000 \* Fax (616) 522-0900  
[www.gillespie-group.com](http://www.gillespie-group.com) \* [www.theabbeyapts.com](http://www.theabbeyapts.com)



## Two Bedroom with Den

Two Bedrooms with den  
 Two Baths  
 Approx. 1,170 to 1,186 sq. ft.  
 2nd Floor Only



## Three Bedroom Townhouse

Three Bedrooms - Two Baths  
 Garage Unit  
 Approx. 1,478 sq. ft.

