

FOR  
LEASE  
1,733 SF



PATRICK T. GILLESPIE

Business Development Analyst  
ptgillespie-group.com  
517-333-4123

CONTACT US

330 Marshall St. Suite 100  
Lansing, MI 48912  
517-333-4123  
gillespie-group.com

JASON KILDEA

Vice President of Development  
jkildea@gillespie-group.com  
517-333-4123

  
**GILLESPIE GROUP**  
LANSING

# FOR LEASE

# 1306 E. MICHIGAN AVE, EAST LANSING, MI 1,733 SF

## PROPERTY DETAILS

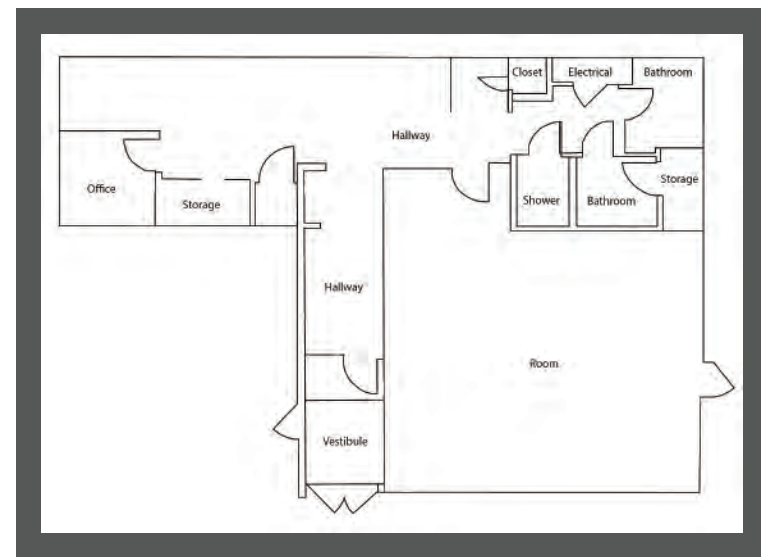
**Location:** 1306 E. Michigan Ave, East Lansing, MI 48823

**Lease Rate:** \$20.00/SF, NNN

- Information:**
- Prime retail location across from Michigan State University (50,351 students)
  - Surrounded by an abundance of student housing units
  - Excellent street exposure (19,115 AADT)
  - Ample amount of on-site parking
  - Conveniently located 1/4 mile off I-127
  - Located near Frandor Shopping Center
  - Close promixatly to over 150 multi-family units and 120 senior housing units

## DESCRIPTION

Situated on the high traffic corridor of East Michigan Avenue, this retail center is conveniently located close to downtown Lansing, downtown East Lansing, Midtown apartments (66 units), MSU campus (Spartan Stadium, Breslin Center, and the Eli Broad Art Museum), boasting an impressive daily traffic count. Located east of Frandor Shopping Center, tenants are within close proximity to a variety of top national retailers and restaurants.





**SITE DISTANCE TO**  
MICHIGAN STATE UNIVERSITY: 600 YARDS  
FRANDOR SHOPPING CENTER: 700 YARDS  
DOWNTOWN EAST LANSING: 1 MILE

FRANDOR SHOPPING CENTER

Logos for JOANN, petco, Bank of America, TJ-maxx, QDOBA MEXICAN EATS, Kroger, BLAZE, Michaels, HomeGoods, and WORLD MARKET.

Feeders  
Pet Supply

Logos for AC HOTEL MARRIOTT, tropical SMOOTHIE CAFE, Hooked FENG CHA, and The OLD BAG of NAILS PUB.

B  
MOGEE  
COFFEE

**SITE**

PNC

Logos for Dunkin' Donuts and Domino's.

MICHIGAN STATE  
UNIVERSITY